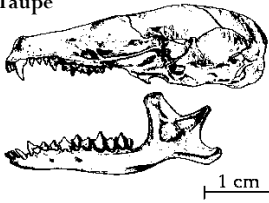


Clé de détermination des crânes de micromammifères en Bretagne

Insectivores

Taupe

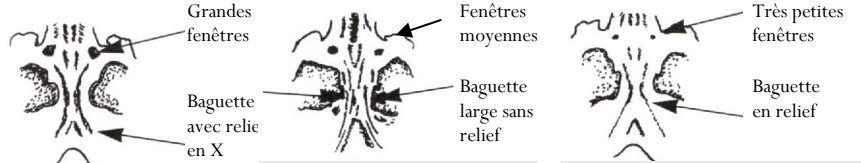


Dents blanches



Crocidure

Plancher de la boîte crânienne (avant du crâne vers le haut)

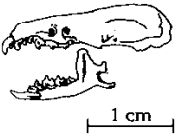


Crocidure musette

Crocidure leucode (espèce répandue mais rare)

Crocidure des jardins (rare, présente sur les îles et 56)

Musaraignes



Dents rouges



Sorex

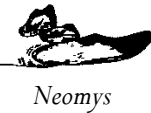


Musaraigne couronnée



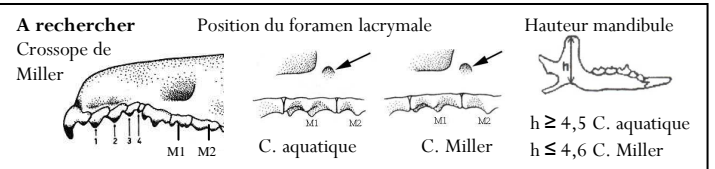
Musaraigne pygmée

Dessins de Sorex à l'échelle 1:1

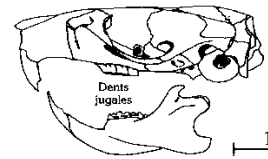


Neomys

Crossope aquatique



Rongeurs



Crâne de Souris grise

4 dents jugales

3 dents jugales

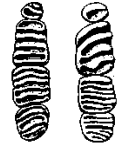
Gliridés

Rangées dentaires Inférieures supérieures

Lérot

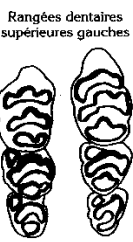


Muscardin

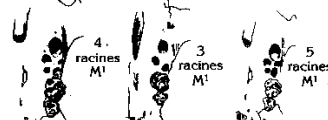
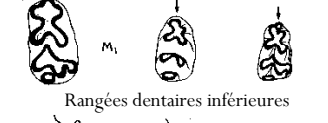


Fond grisé = espèce rare dans les pelotes

Muridés



Rat noir Rat surmulot



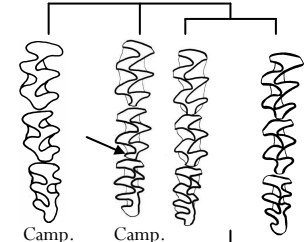
Mulot sylvestre Souris grise Rat des moissons

Campagnols

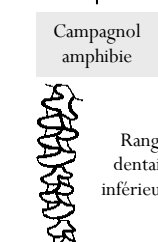


petit campagnol

gros campagnol

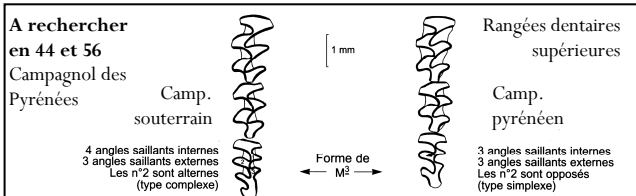


Camp. roussâtre Camp. agreste

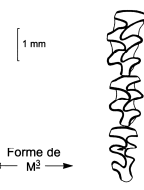
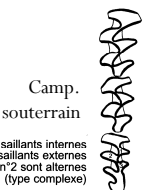


Campagnol amphibie

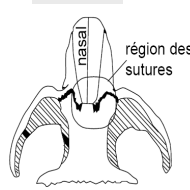
Rangées dentaires inférieures



A rechercher en 44 et 56 Campagnol des Pyrénées



Rangées dentaires supérieures Camp. pyrénéen



Camp. des champs



Camp. souterrain

